

POLICY AND PROCEDURES FOR REOPENING SCSM DURING COVID-19

Everyone entering into the SCSM Center, including but not limited to staff, volunteers, clients, guests, landlords, delivery people, contractors, etc., must adhere to the procedures set forth below.

Face masks must be worn at all times while at the Center.

Single use masks will be provided for anyone entering the Center.

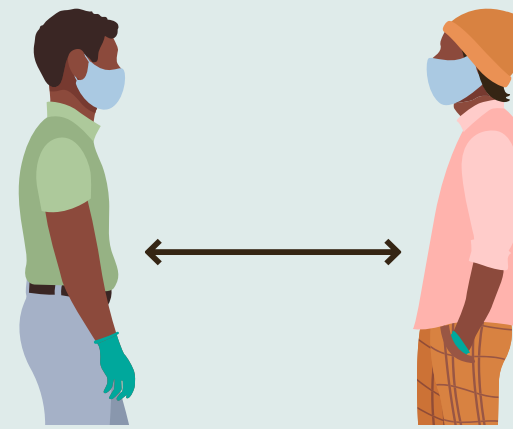
Masks may be taken off while eating or if an employee is in their office, alone.



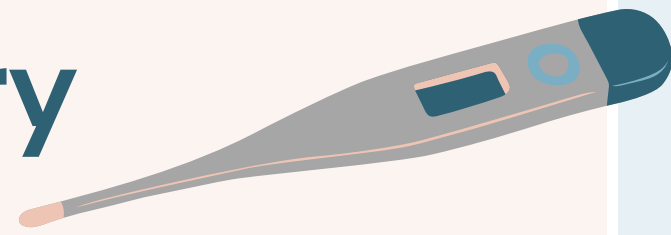
People will remain 6-feet apart at all times, where possible.

No mingling in common spaces.

Handshaking, hugging, and other physical contact is not allowed.



Temperature Checks will be taken upon entry



If your temp is 100.1 or higher, we ask you kindly to leave and reschedule when you are feeling better.

Walk-ins

We welcome visitors and walk-ins, however during this time, we ask for you to call the front desk before arriving so we can accommodate in the safest way possible.



Cleaning and Housekeeping

- Everyone entering the center will use hand sanitizer before touching anything.
- Basic cleaning and hand washing provisions, including hand sanitizer with at least 60% alcohol, will be available in centralized locations.
- Disposable dishes and flatware should be used at all times.
- There will be no open trash cans in common areas- these will be replaced with touchless closed lid trash cans.



Covid-19 Contagion

Everyone must inform the Executive Director of any potential exposure to COVID-19 within 24 hours.

No one will enter the Center if there is any doubt about symptoms. If there is any question, you should seek medical attention and be cleared prior to coming to the Center.

